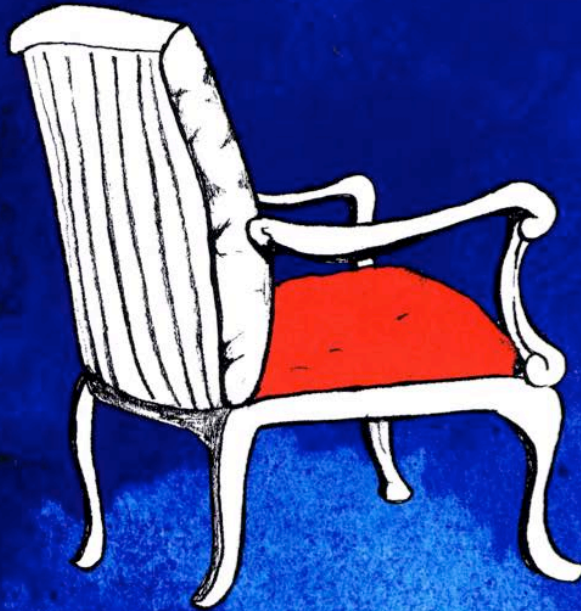


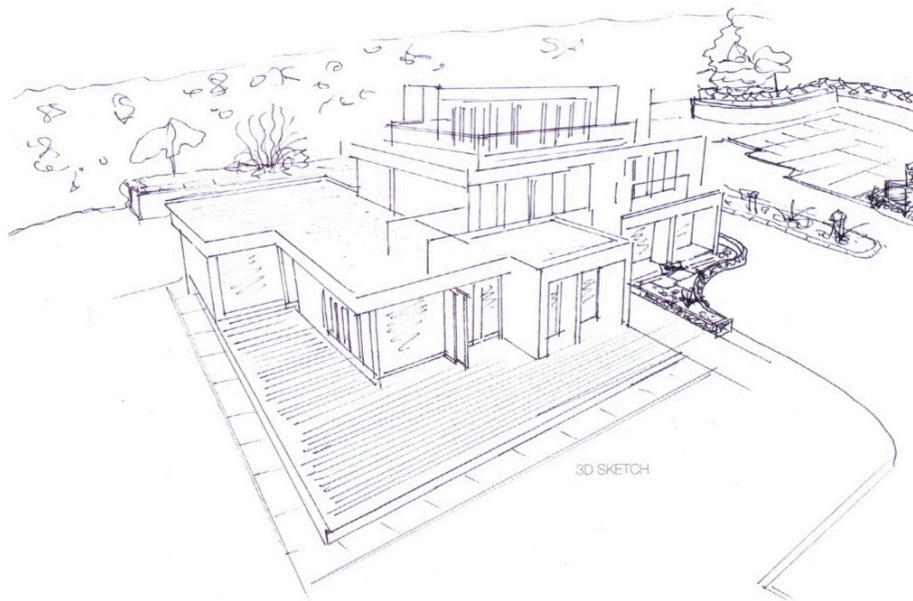
SPECIAL 100<sup>TH</sup> ANNIVERSARY EDITION

# HOMES & INTERIORS SCOTLAND



£3.90





## JOINING FORCES

SURROUNDED BY AN ACRE OF GROUNDS, THIS HOUSE SHOULD HAVE BEEN SITTING PRETTY. BUT IT TOOK RADICAL GARDENING SOLUTIONS TO CONNECT IT TO ITS OUTDOOR SPACE

Photography George Leslie Words Rosie Duncan

### IN THE BEGINNING THERE WAS A HOUSE. APTLY

nicknamed by gardener Kirsty McLean as the 'wedding cake', it stood angular and ivory white in an acre of open space in the Aberdeenshire countryside. Kirsty, of the Garden Design Company Scotland, and Jake Dickie of Landform Ltd, her builder, were tasked with blending the bold, contemporary house with its neglected grounds and the landscape beyond. "We were asked to bring the house alive," she explains. "The brief was to make it look as if the garden belonged to the house, and to the surrounding area."

Kirsty's first impression was that the house was wildly out of proportion with the ▶



garden. “The house, of course, was the priority and had been built in the best possible position for a property, without taking into consideration the effect this would have on the garden,” she says. “It is undoubtedly architecturally impressive, but it had little relationship to the outdoor space. In fact, it looked a bit like it had been dropped in out of nowhere.” With the bulk of the land at the front of the house, it felt as if the grounds were out of balance. The solution was surprising: an extra parcel of land was bought to improve the ratio of house to garden, increasing the already extensive grounds to just over one and a half acres.

The clients, a professional couple with three older children, dreamed of the south-facing garden being a secluded space for entertaining – an idea which became the heart of Kirsty’s design. Four months of work transformed the previously empty stretch of land, whose only feature was a row of garages, into a modern garden with separate seating areas and decking for dining, a music cabin and an informal path for walks around the grounds. Everything is connected, including the link from the ▶



